

MX-300

Unsurpassed Image Quality and Easy Operation

- Stable Output by The Inverter System
- Full AEC Mode (Auto kV)
- Auto Release Compression After Exposure
- High Performance Dual Focus System
- Highly Sensitive Fiber Grid Bucky Device
- 19 Step Density Control
- 2 Precise Collimation Formats



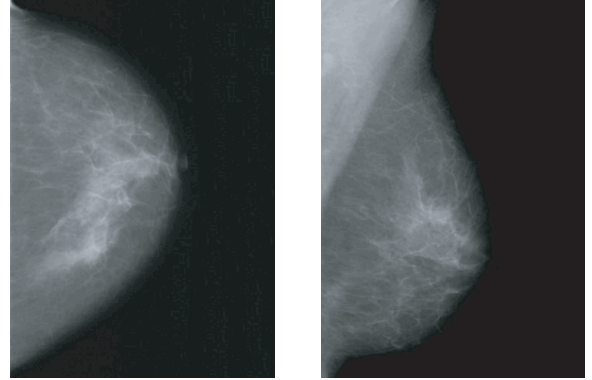
icanview

MX-300 Mammography system

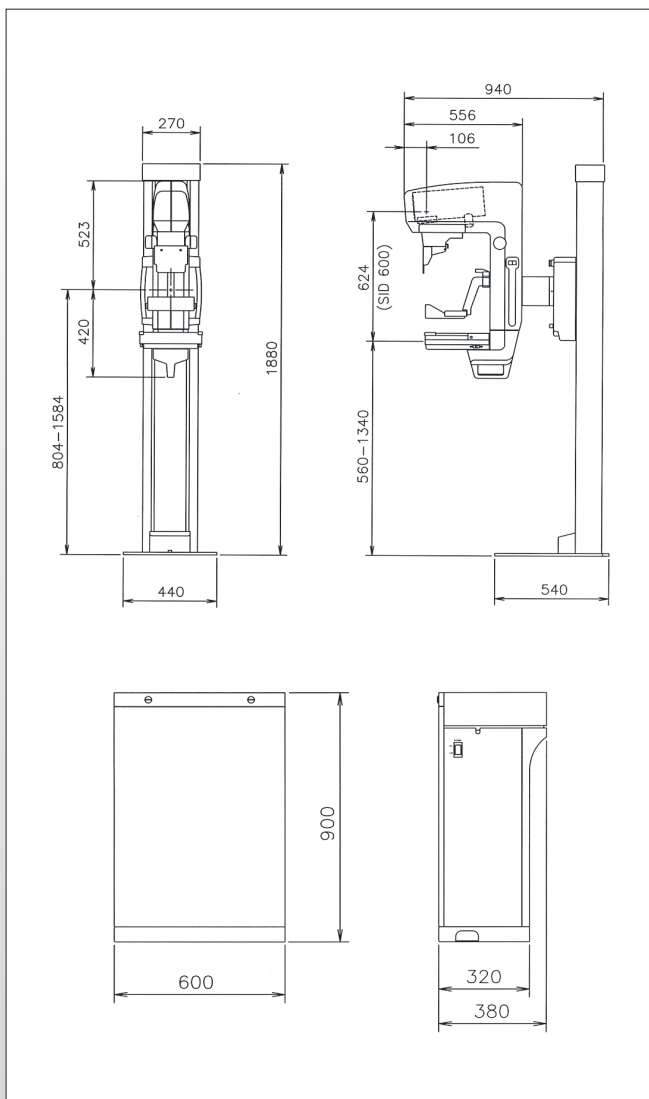


Intelligent Automatic Exposure Control (AEC)

With the Automatic Exposure Control system, it is possible to produce images with reliable intensity suitable for any film, screen, or method of radiography. Furthermore, it greatly enhances the convenience of radiography by embedding the Full-AEC function which is capable of utilizing the Auto kV.



Dimensions



Specifications

Generator

| | |
|----------------------|--|
| Type | High Frequency Inverter |
| Radiographic Ratings | Large Focal Point 22-35kV / 1-600mAs Small Focal Point 22-35kV / 1-100mAs |

X-ray Tube

| | |
|-----------------|---------------------------|
| Focal Spot Size | Dual Focus 0.3 and 0.1 mm |
| Rotating Anode | Molybdenum(Mo) / 300KHU |
| Port Material | Beryllium(Be) |
| Filtration | Mo |

Radiographic Stand

| | |
|-------------|--|
| C-ARM | Vertical 560-1340mm Rotation Right 180° / Left 160° |
| SID | 600mm Fixed distance |
| Compression | Manual and Motorized (Max 18kg) Automatic or manual Release |

Bucky Device

| | |
|---------------|-----------------------------------|
| Cassette Size | 18 X 24cm |
| GRID | Reciprocating, 4 : 1 91 line/inch |

Automatic Exposure Control

| | |
|--------------------|--|
| Type | Solid-State Detector Microprocessor Control |
| Mode | Full / Semi / Manual |
| Density Adjustment | 19 density steps |

Optional

- 24 X 30cm Bucky Device
- Magnification Device
- Compression Force and Thickness Display Unit
- Pb Acryl Plate
- Biopsy unit

Line Voltage

200~220Vac, 50/60Hz, Single Phase